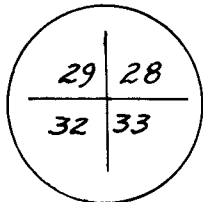


**CERTIFIED LAND CORNER RECORDATION**

DESCRIPTION OF CORNER EVIDENCE FOUND, AND ORIGINAL RECORD (If known)

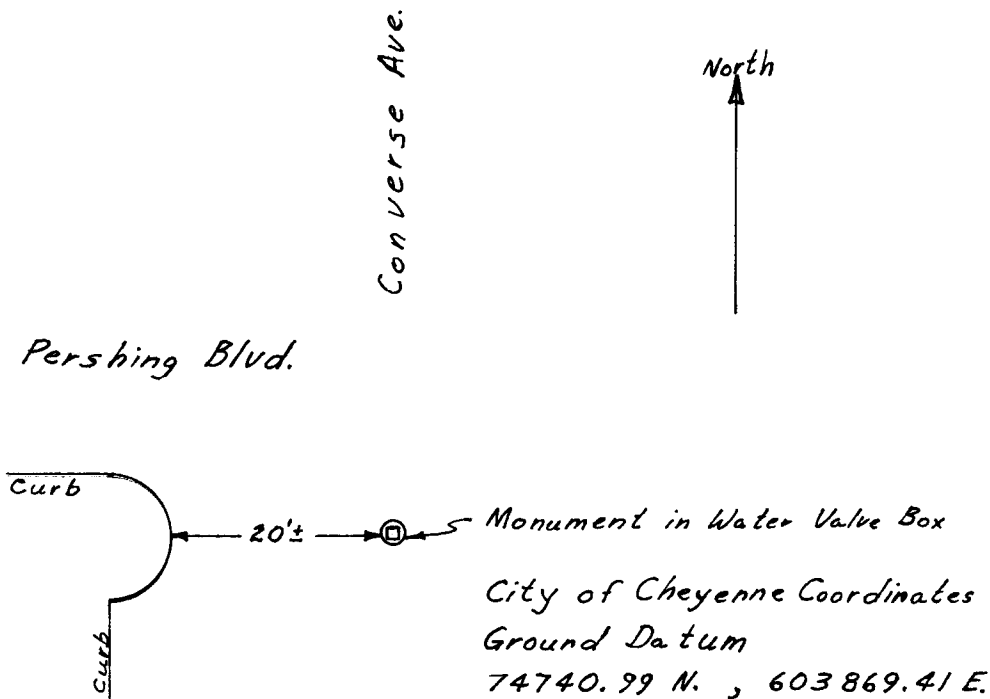
T-14-N, R-66-W



Found Concrete Monument with square Brass Plate set 14"± below Street grade in Water Valve Box. Due to poor light could not read information contained on Brass Plate

DESCRIPTION OF MONUMENT AND ACCESSORIES ESTABLISHED TO PERPETUATE THE ORIGINAL LOCATION OF THIS CORNER:

SKETCH, WITH COURSE AND DISTANCE TO ADJACENT CORNER IF DETERMINED IN THIS SURVEY. (May Sketch or Paste Reproduction on Reverse Side.)



I, Edward C. Fry certify that I have carefully performed ~~or reviewed~~ the work done on the diagrammed corner as reported on this recordation form and approve the same.

Edward C. Fry P.E./L.S. 662  
Signature of Surveyor Registration No.

STATE OF WYOMING,  
Office of Clerk and Recorder,  
County of Sarasie

**617494**

This "corner record" was filed for record on the \_\_\_\_\_ day of APR 28 1981, 19\_\_\_\_, was noted on the cross-index plat and is assigned page No. \_\_\_\_\_, in book No. \_\_\_\_\_

Janet C. Whitehead  
County Official

|                       |          |          |            |
|-----------------------|----------|----------|------------|
| Cross Index No. _____ | T. _____ | R. _____ | Mer. _____ |
| _____                 | T. _____ | R. _____ | Mer. _____ |
| _____                 | T. _____ | R. _____ | Mer. _____ |
| _____                 | T. _____ | R. _____ | Mer. _____ |
| _____                 | T. _____ | R. _____ | Mer. _____ |
| _____                 | T. _____ | R. _____ | Mer. _____ |
| _____                 | T. _____ | R. _____ | Mer. _____ |

V-9 14-66